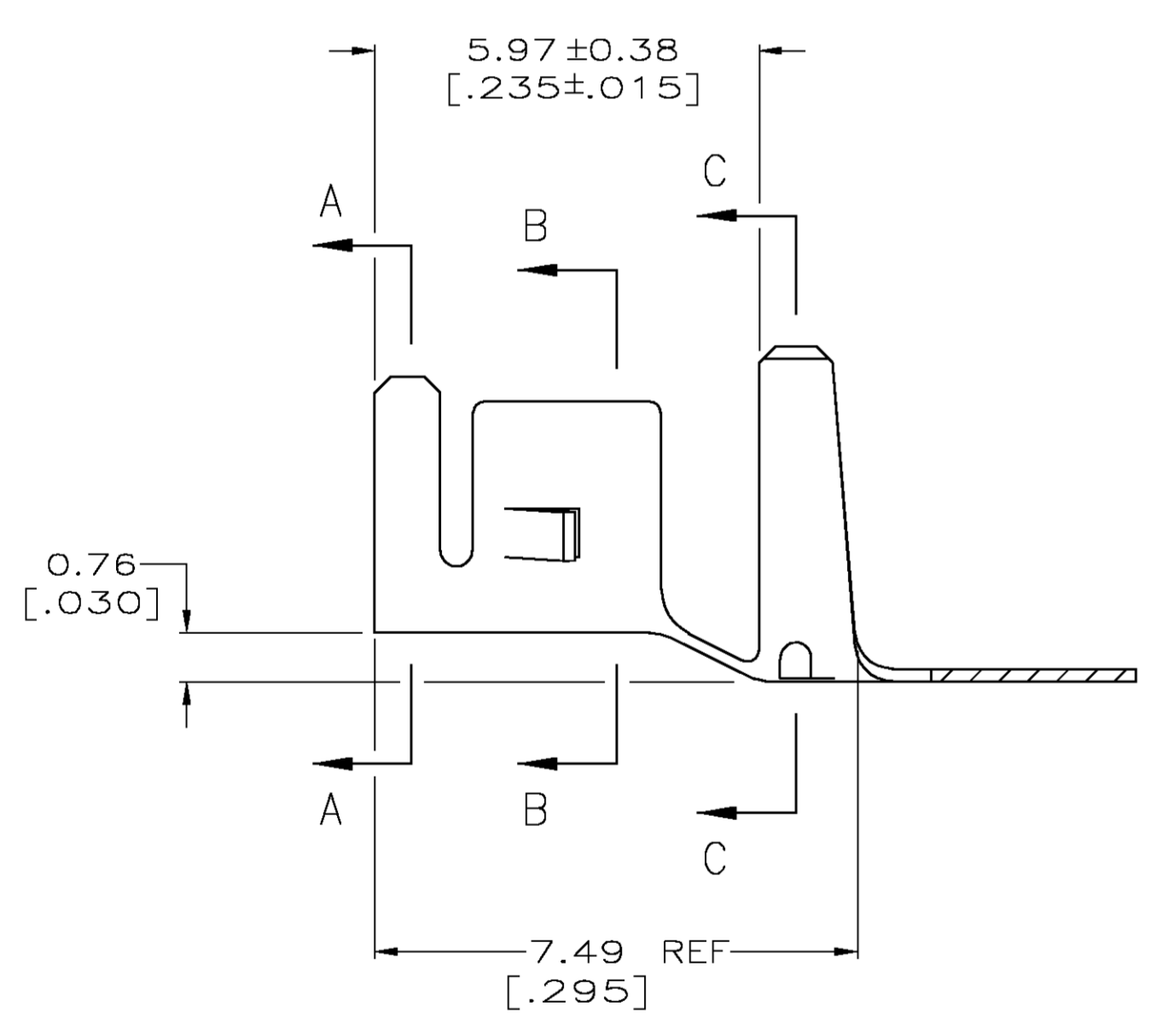
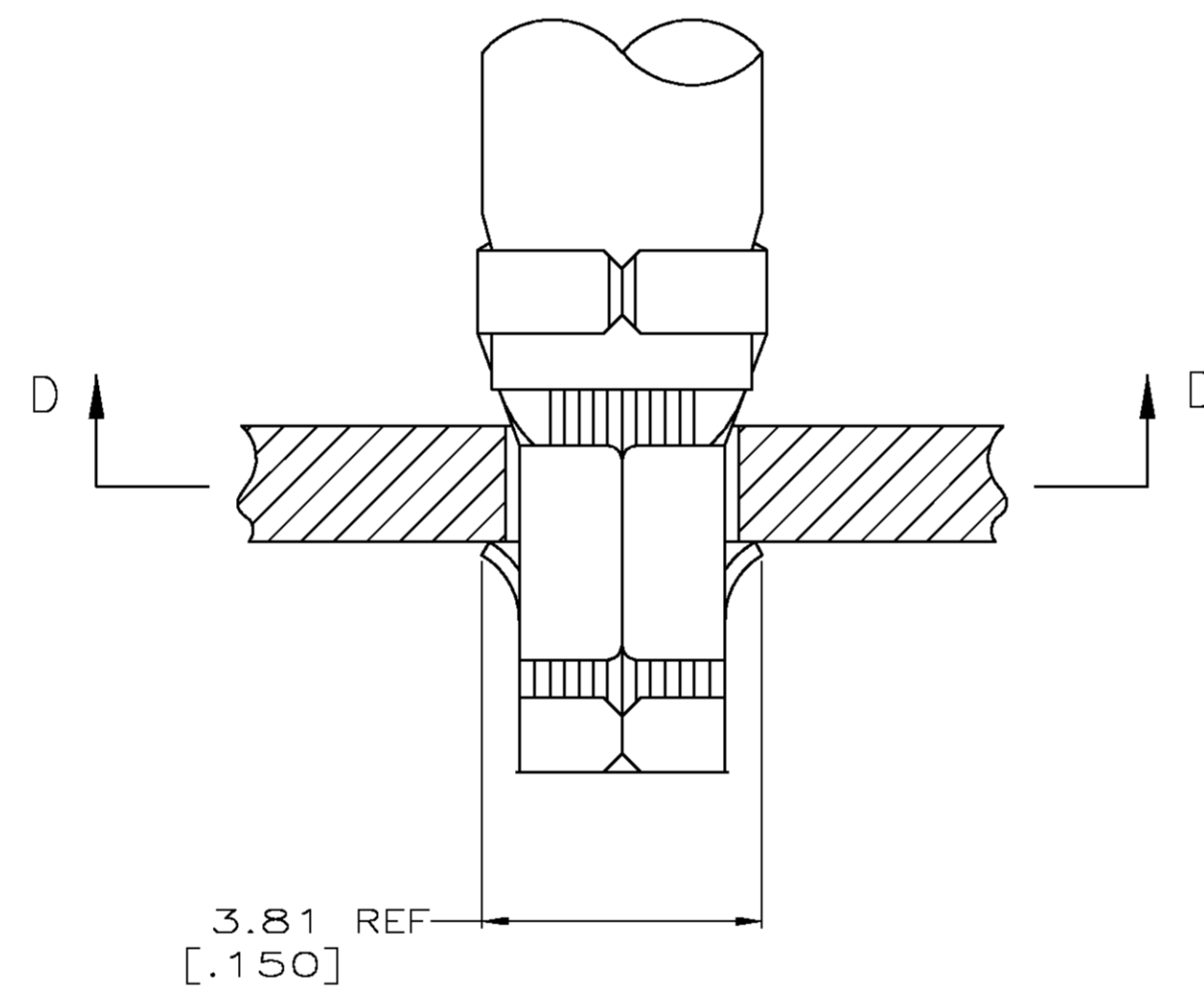


SECTION D-D

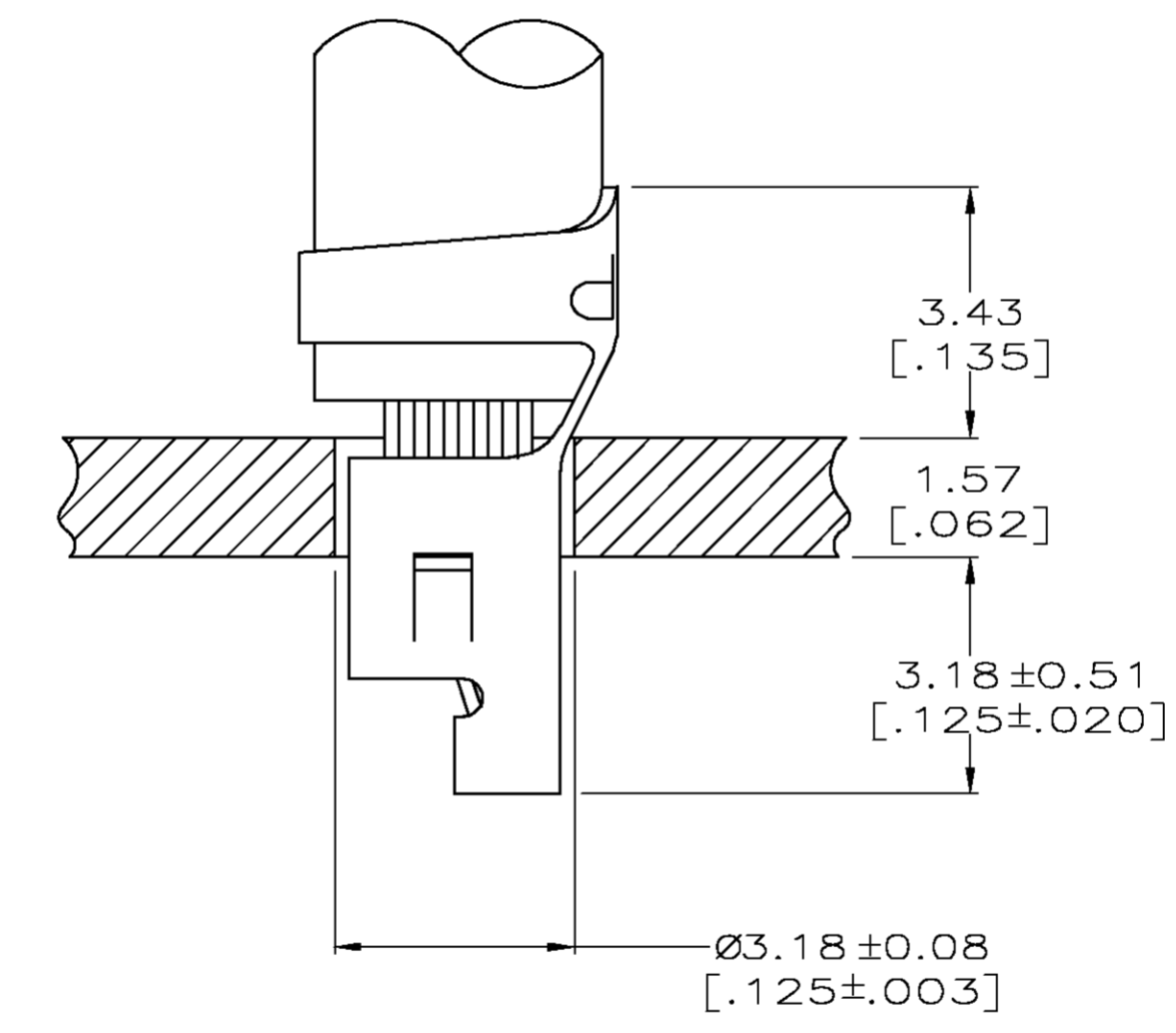
1. PARTS COMPLY WITH AMP SOLDERABILITY SPEC 109-11-3.
2.  $\Delta$  0.00508 [.000200] MIN BRIGHT TIN-LEAD.
3. WIRE RANGE: 0.80 - 2.0 mm<sup>2</sup> [18 - 14 AWG].
4. INSULATION RANGE: 2.29 - 3.81 [.090 - .150] DIA.
5. DIMENSIONS IN BRACKETS ARE IN INCHES.
6.  $\Delta$  0.00508 [.000200] MIN BRIGHT TIN.



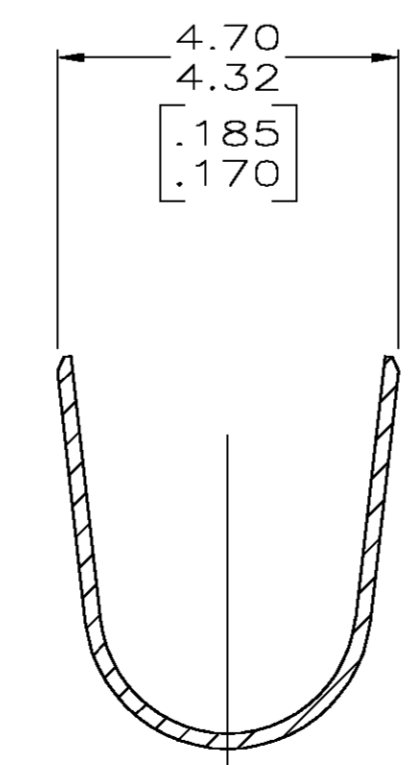
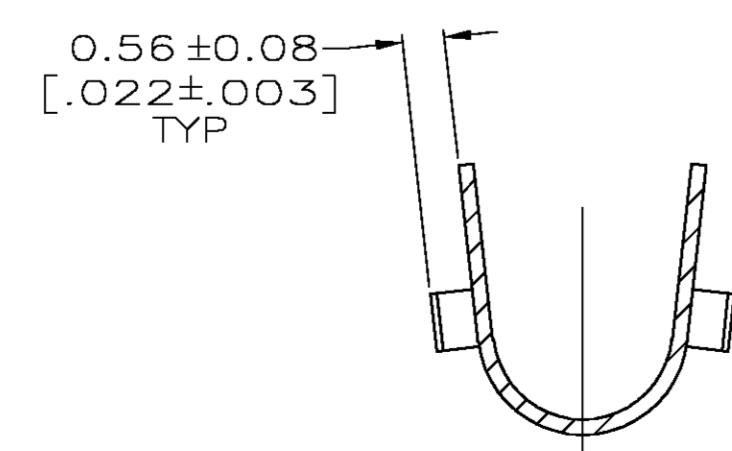
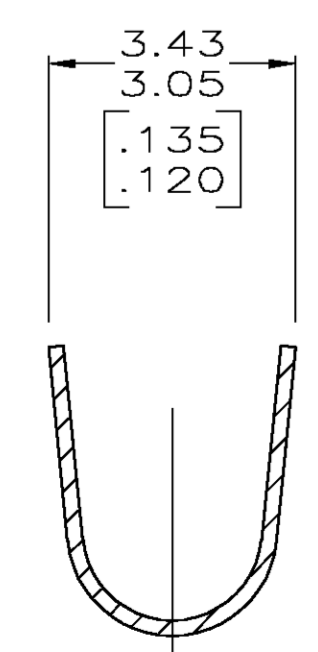
SECTION A-A



SECTION B-B



SECTION C-C



**METRIC**

|            |            |
|------------|------------|
| $\Delta$ 6 | 3-770060-1 |
| $\Delta$ 2 | 770060-1   |
| FINISH     | PART NO.   |

|  |             |                                  |  |
|--|-------------|----------------------------------|--|
| THIS DRAWING IS A CONTROLLED DOCUMENT. |             | DWN<br>S. CARPENTER<br>22AUG2003 | <br>Tyco Electronics Corporation<br>Harrisburg, PA 17105 |
| DIMENSIONS: INCHES                     |             | DWG<br>J. ELLIS<br>22AUG2003     |  |
| TOLERANCES UNLESS OTHERWISE SPECIFIED: |             | APVD<br>J. ELLIS<br>22AUG2003    | NAME<br>TERMINAL, AMP-IN™                                |
| 0 PLC ±                                |             | PRODUCT SPEC                     |  |
| 1 PLC ±                                |             | APPLICATION SPEC                 |  |
| 2 PLC ±                                | 0.13 [.005] |                                  |  |
| 3 PLC ±                                |             |                                  |  |
| 4 PLC ±                                |             |                                  |  |
| ANGLES ±                               |             |                                  |  |
| MATERIAL<br>0.198 [.0078] PH BRZ       | FINISH      | SIZE<br>A1                       | CAGE CODE<br>770060                                      |
| CUSTOMER DRAWING                       |             | WEIGHT                           | RESTRICTED TO  |
| SCALE 10:1                             |             | SHEET 1 OF 1                     | REV N  |